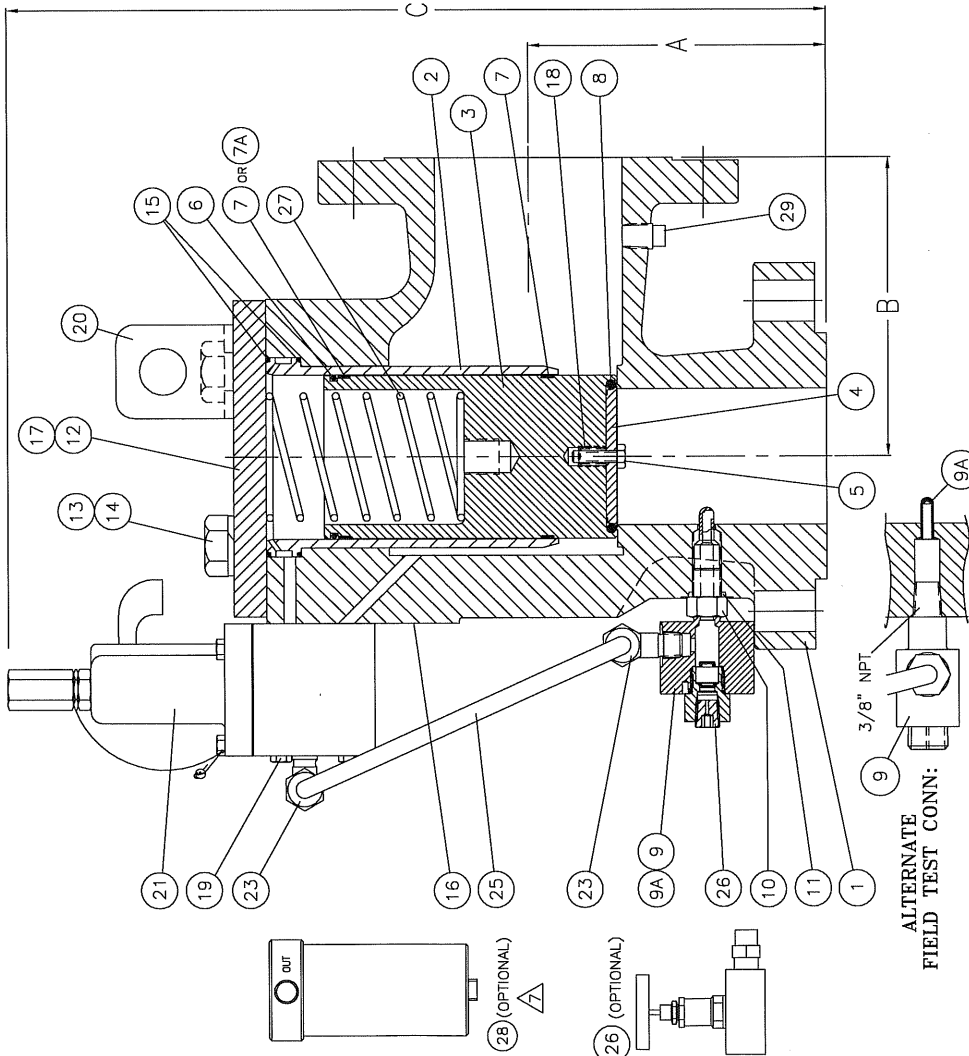


ITEM NO.	PART NAME	CARBON STEEL (NACE)	STAINLESS STEEL (NACE)
1	BODY	SA-352 LCC or SA-351 CF8M	SA-351 CF8M
2	LINER	A743 CF8M	A743 CF8M
3	PISTON	A479 316/ A351 CF8M	A479 316/ A351 CF8M
4	SEAT RETAINER	316 SS	316 SS
5	RETAINER BOLT	A193 B8 or 316 SS	A193 B8 or 316 SS
6	PISTON SEAL	ELASTOMER/PLASTIC	ELASTOMER/PLASTIC
7	WEAR RING	GRAPHITE-FILLED PTFE	GRAPHITE-FILLED PTFE
7A	WEDGE RING	ELASTOMER/PLASTIC	ELASTOMER/PLASTIC
8	SEAT	316 SS	316 SS
9	FTC BODY	316 SS	316 SS
9A	PICKUP TUBE	316 SS	316 SS
10	NUT, LOCK	STAINLESS STEEL	STAINLESS STEEL
11	SEAL	TEFLON	TEFLON
12	CAP	SA-516 GR 70	SA-240 316
13	LOCKWASHER	CARBON STEEL	STAINLESS STEEL
14	HH CAP SCREW	SA-193 B7	SA-193 B8
15	SEAL, LINER	ELASTOMER	ELASTOMER
16	NAMEPLATE, WARNING	STAINLESS STEEL or ALUM.	STAINLESS STEEL or ALUM.
17	METALLIZED POLYESTER	METALLIZED POLYESTER	METALLIZED POLYESTER
18	LOCKING THD. INSERT	304 SS (INCONEL X750)	304 SS (INCONEL X750)
19	BOLT	316 SS	316 SS
20	LIFT BRACKET	CARBON STEEL, A36	STAINLESS STEEL
21	F100 PILOT	STNLS STEEL/STNLS STEEL SPRING	STNLS STEEL/STNLS STEEL SPRING
22	TUBE FITTING	316 SS	316 SS
23	TUBING	316 SS	316 SS
25	VENTED PLUG, OR OPTIONAL MANUAL VALVE	STAINLESS STEEL	STAINLESS STEEL
26	FILTER (OPTIONAL)	302/304 SS/5	302/304 SS/5
27	PIPE PLUG	CARBON STEEL / SS ELEMENT	STAINLESS STEEL
28	PIPE PLUG	CARBON STEEL	STAINLESS STEEL
29	PIPE PLUG	CARBON STEEL	STAINLESS STEEL



**NOTES:**

1. F7040 SERIES VALVES HAVE PLASTIC SEAT AND PISTON SEAL.
2. F7050 SERIES VALVES HAVE ELASTOMER SEAT AND PISTON SEAL. PISTON SEAL HAS TEFLON BACKUP RING.
3. ASME NOZZLE COEFFICIENT .824 (GAS) / .634 (LIQUID).
4. F100 PILOT VALVE - MODULATING, FLOWING TYPE.
5. FOR NACE SERVICE, ITEM 27 OMITTED OR FURNISHED IN INCONEL X750 AS OPTION.
6. FLANGE LOCATION DIMENSIONS ARE ±1/8".
7. SEE DRAWING F7300-FIL-BRACKET FOR FILTER INSTALLATION.

VALVE SIZE	ORIFICE SIZE (SQ. IN.)	FLOW AREA (SQ. IN.)
1x2	.957	.719
1.5x3	1.500	1.767
2x3	1.939	2.953
3x4	2.900	6.605
4x6	3.816	11.437
6x8	5.760	26.06
8x10	7.625	45.66

VALVE SIZE	1" INLET x 2" OUTLET			1.5" INLET x 3" OUTLET			2" INLET x 3" OUTLET			MAX PRESSURE ORIFICE SIZE (AREA) RATING				
	ASME RATING	A	B	ASME RATING	A	B	ASME RATING	A	B	CS	SS			
150	4.13	4.50	13.1	150	5.13	4.88	14.6	150	5.38	4.88	15.7	150	285	275
300	4.38	4.50	13.3	300	5.13	4.88	14.6	300	5.38	4.88	15.7	300	720	720
600	4.38	4.50	13.3	600	5.13	4.88	14.6	600	5.38	4.88	15.7	600	720	720

VALVE SIZE	3" INLET x 4" OUTLET			4" INLET x 6" OUTLET			6" INLET x 8" OUTLET			8" INLET x 10" OUTLET					
	ASME RATING	A	B	ASME RATING	A	B	ASME RATING	A	B	ASME RATING	A	B	C		
150	6.13	6.38	18.2	150	7.75	8.25	18.8	150	9.44	9.50	22.8	150	10.88	11.00	26.5
300	6.13	6.38	18.2	300	7.75	8.25	18.8	300	9.44	9.50	22.8	300	10.88	11.00	26.5
600	6.13	6.38	18.2	600	7.75	8.25	18.8	600	9.44	9.50	22.8	600	11.62	11.80	27.1

CUSTOMER NAME \_\_\_\_\_

CUSTOMER P.O. NO. \_\_\_\_\_

SERIAL NO. \_\_\_\_\_

TAG NO. \_\_\_\_\_

ASSY NO. \_\_\_\_\_

SET PRESSURE \_\_\_\_\_ psig CAPACITY \_\_\_\_\_ scfm/gpm

ACCESSORIES:  NONE  MANUAL VALVE  FILTER  OTHER

NOTES \_\_\_\_\_

PREPARED BY: \_\_\_\_\_ DATE: \_\_\_\_\_

AUTHORIZED REP: \_\_\_\_\_

CONNECTIONS \_\_\_\_\_

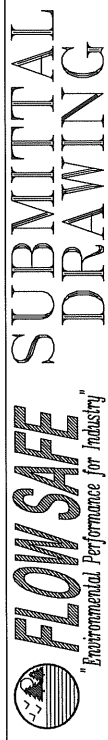
SIZE ASME RATING REF RTJ SPECIAL \_\_\_\_\_

INLET \_\_\_\_\_

OUTLET \_\_\_\_\_

F100 PV / F7050 / LINER SEAL SOFT GOODS (ELASTOMER)	
MATERIAL	SEAT SEALS
BUNA-N	
VITON	
EPDM	
KALREZ	

F7040 SOFT GOODS (PLASTIC)	
MATERIAL	SEAT SEALS
TEFLON	
KEL-F	
VESPEL	
PEEK	



**FLOW SAFE** SUBMITTAL DRAWING

WITH F100 SERIES PILOT VALVE

F7100

TITLE: F7000 SERIES WITH F100 PILOT VALVE

DRAWING NO.: F7100

SCALE: NTS REV.: J DWG. BY: JWO DATE: 5-MAY-08 SHEET: 1 OF 1