

VALVE SIZE 2"INLET x 3"OUTLET			
ASME RATING	A	B	C
150	4.56 (116)	5.31 (135)	15.0 (381)
300	4.69 (119)	5.31 (135)	15.1 (384)
600	5.06 (129)	5.31 (135)	15.5 (394)

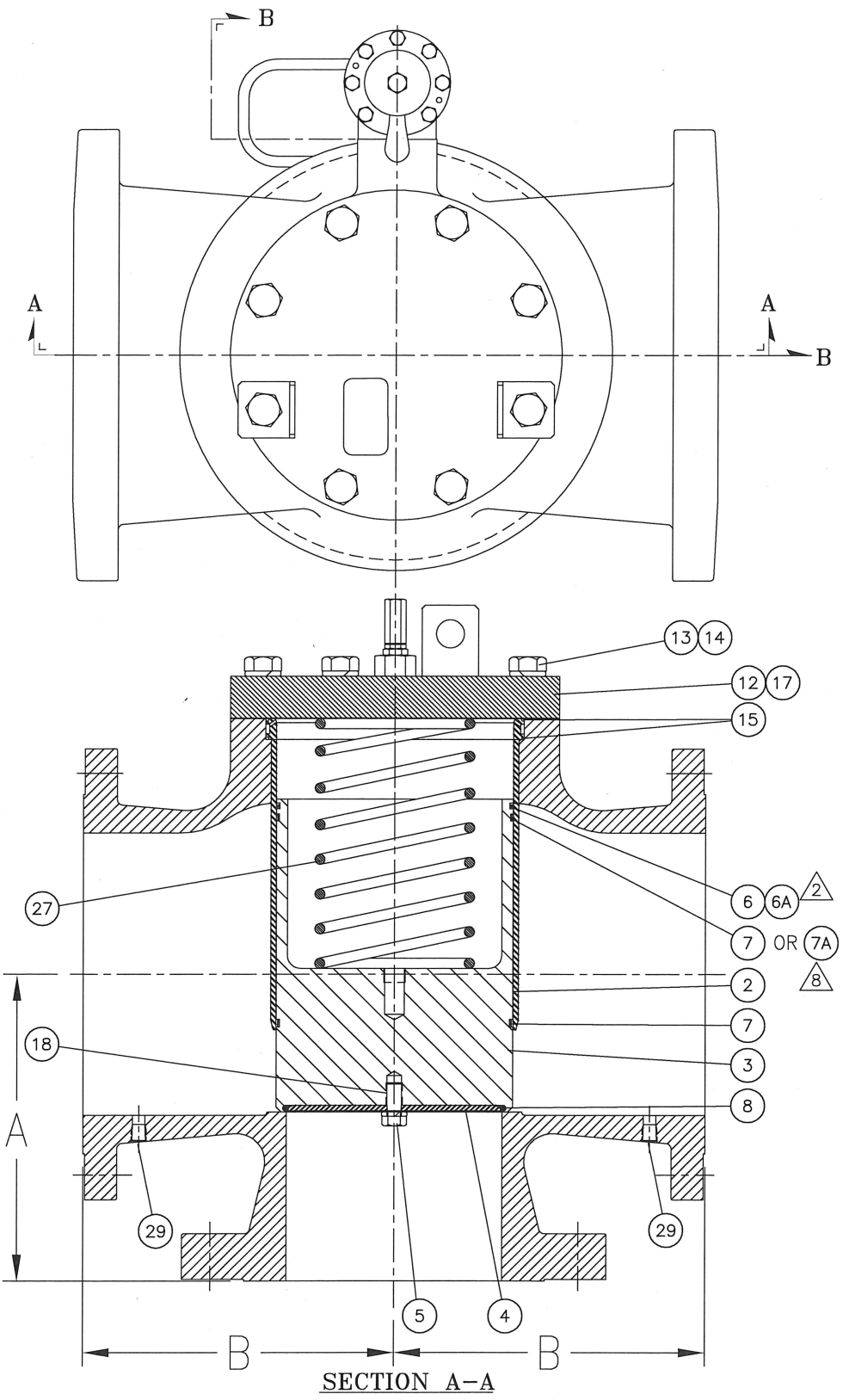
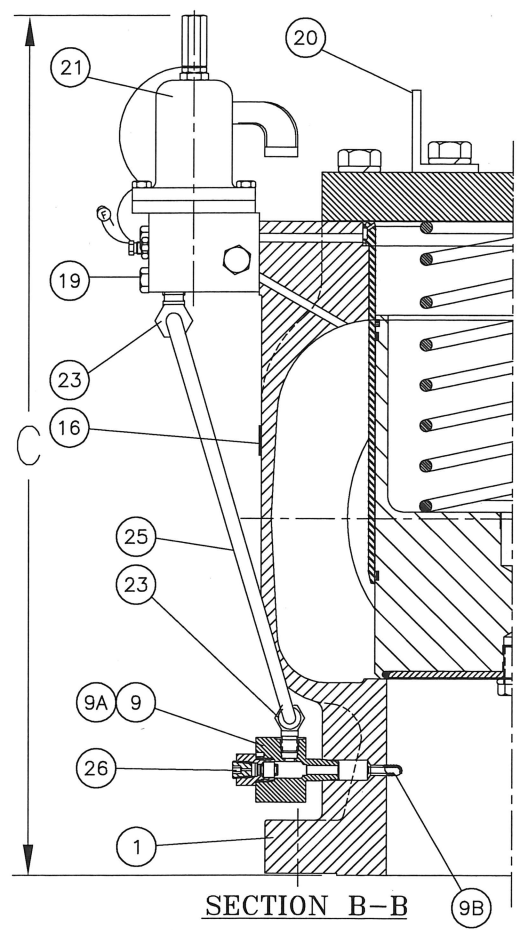
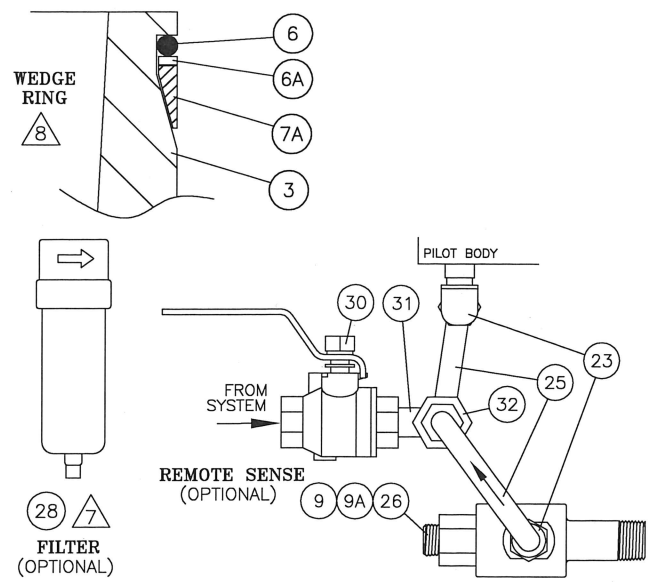
VALVE SIZE 3"INLET x 4"OUTLET			
ASME RATING	A	B	C
150	5.56 (141)	7.00 (178)	17.7 (450)
300	5.81 (148)	7.00 (178)	18.0 (457)
600	6.12 (155)	7.00 (178)	18.3 (465)

VALVE SIZE 4"INLET x 6"OUTLET			
ASME RATING	A	B	C
150	6.90 (175)	7.38 (187)	18.0 (457)
300	7.43 (189)	7.38 (187)	18.5 (470)
600	7.93 (201)	7.38 (187)	19.0 (483)

VALVE SIZE 6"INLET x 8"OUTLET			
ASME RATING	A	B	C
150	8.87 (225)	8.25 (210)	22.2 (564)
300	9.31 (236)	8.25 (210)	22.7 (577)
600	10.00 (254)	8.25 (210)	23.4 (594)

VALVE SIZE 8"INLET x 8"OUTLET			
ASME RATING	A	B	C
150	10.44 (265)	11.44 (291)	26.6 (676)
300	10.94 (278)	11.44 (291)	27.1 (688)
600	11.12 (282)	11.44 (291)	27.3 (693)

VALVE SIZE 8"INLET x 10"OUTLET			
ASME RATING	A	B	C
150	10.25 (260)	11.06 (281)	25.9 (658)
300	10.93 (278)	11.06 (281)	26.5 (673)
600	11.75 (298)	11.06 (281)	27.4 (696)



VALVE SIZE	ORIFICE SIZE	FLOW AREA SQ.IN. (SQ.CM.)
2 x 3	1.939 (49.3)	2.953 (1905)
3 x 4	2.900 (73.7)	6.605 (4261)
4 x 6	3.816 (96.9)	11.437 (7379)
6 x 8	5.760 (146.3)	26.06 (16813)
8 x 8	7.625 (193.7)	45.66 (29458)

ORIFICE SIZE (AREA)	MAX. PRESSURE (CS-WCB)	
	ASME RATING	PSIG (BARG)
SEE CHART	150	285 (19)
	300	740 (51)
	600	1480 (102)

- NOTES:**
- F7040 SERIES VALVES HAVE PLASTIC SEAT AND PISTON SEAL.
  - F7050 SERIES VALVES HAVE ELASTOMER SEAT AND PISTON SEAL. PISTON SEAL HAS TEFLON BACKUP RING.
  - ASME NOZZLE COEFFICIENT 0.824 (GAS).
  - F300 PILOT VALVE - MODULATING TYPE, W/INTEGRAL BACKFLOW PREVENTER.
  - FOR NACE SERVICE, ITEM 27 OMITTED OR FURNISHED IN INCONEL AS OPTION.
  - DIMENSIONS ARE IN INCHES AND (mm). FLANGE LOCATIONS ARE ±1/8" (3 mm).
  - FILTER TO BE INSTALLED IN TUBING AT PILOT INLET.
  - WEDGE RING USED IN PIPELINE APPLICATIONS AND WHERE OTHERWISE SPECIFIED. SEE DETAIL.

ITEM NO	PART NAME	STANDARD MATERIALS	
		CARBON STEEL(NACE)	STAINLESS STEEL(NACE)
1	BODY	SA-351 CF8M, SA-352 LCC, OR SA-216 WCB	SA351 CF8M
2	LINER	A743 CF8M	A743 CF8M
3	PISTON	A479 316/A351 CF8M	A479 316/A351 CF8M
4	SEAT RETAINER	316/316L SS	316/316L SS
5	RETAINER BOLT	A193-B8 OR 316 SS	A193-B8 OR 316 SS
6	PISTON SEAL	ELASTOMER/PLASTIC	ELASTOMER/PLASTIC
6A	BACKUP RING (F7050)	PTFE	PTFE
7	WEAR RING	GRAPHITE-FILLED PTFE	GRAPHITE-FILLED PTFE
7A	WEDGE RING	GRAPHITE-FILLED PTFE OR THERMOPLASTIC POLYESTER (PET-P)	GRAPHITE-FILLED PTFE OR THERMOPLASTIC POLYESTER (PET-P)
8	SEAT	ELASTOMER/PLASTIC	ELASTOMER/PLASTIC
9	FTC BODY, PISTON	316 SS	316 SS
9A	FTC SEALS	ELASTOMER	ELASTOMER
9B	PICKUP TUBE	316/316L SS	316/316L SS
12	CAP	SA516-70	SA240/SA-479 316/316L
13	LOCKWASHER	316 SS	316 SS
14	CAPSCREW	SA193-B7	SA193-B8
15	SEAL	ELASTOMER	ELASTOMER
16	NAMEPLATE	316 SS	316 SS
17	NAMEPLATE, WARNING	METALLIZED POLYESTER	METALLIZED POLYESTER
18	LOCKING THD. INSERT	304 SS (INCONEL X750)	304 SS (INCONEL X750)
19	BOLTS	316 SS	316 SS
20	LIFT BRACKET	CARBON STEEL, A36	STAINLESS STEEL
21	F300 PILOT	316 SS/STNLS STEEL SPRING	316 SS/STNLS STEEL SPRING
23	TUBE FITTING	316 SS	316 SS
25	TUBING	316 SS	316 SS
26	VENTED PLUG	316 SS	316 SS
27	DOVE SPRING	302/304 SS	302/304 SS
28	FILTER (OPTIONAL)	316 SS	316 SS
29	PLUG	316 SS	316 SS
30	MANUAL VALVE	316 SS	316 SS
31	TEE	316 SS	316 SS
32	CHECK VALVE	316 SS	316 SS

CUSTOMER NAME \_\_\_\_\_  
 CUSTOMER P.O. NO. \_\_\_\_\_  
 SERIAL NO. \_\_\_\_\_  
 TAG NO. \_\_\_\_\_  
 ASSY NO. \_\_\_\_\_  
 SET PRESSURE \_\_\_\_\_ psig (barg) CAPACITY \_\_\_\_\_ scfm (Nm<sup>3</sup>/hr)  
 ACCESSORIES:  NONE  REMOTE SENSE  FILTER  OTHER  
 NOTES \_\_\_\_\_

PREPARED BY:	DATE:			
AUTHORIZED REP:				
CONNECTIONS				
	SIZE	ASME RATING	RF RTJ	SPECIAL
INLET				
OUTLET				

F300 PV /F7050 /LINER /FTC SEAL SOFT GOODS (ELASTOMER)		
MATERIAL	SEAT	SEALS
BUNA-N		
VITON		
EPDM		
KALREZ		

**FLOW SAFE** SUBMITTAL DRAWING  
*"High Performance Safety Relief Valves"*

TITLE: F7300 SERIES WITH DUAL OUTLET AND F300 PILOT VALVE

DRAWING NO.: F7300-DUAL