

EAGLE E-SERIES® - EPR ELECTRONIC PRESSURE RECORDER



HIGHLIGHTS

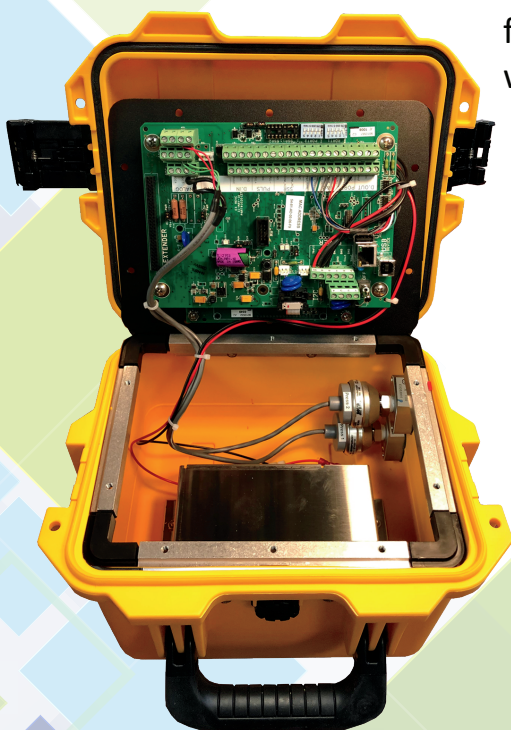
- Live Pressure & Temperature
- Multi Pressure Capable
- Battery, Solar, and UPS Options
- Small Footprint for Easy Locating
- Live, Min/Max, and Historical Archiving
- Circular Charting with Field Manager™
- Flexible Configuration & Ease of Operation
- Simple Start-up for Fast ROI
- Cross Platform Compatible & Programmable



APPLICATIONS

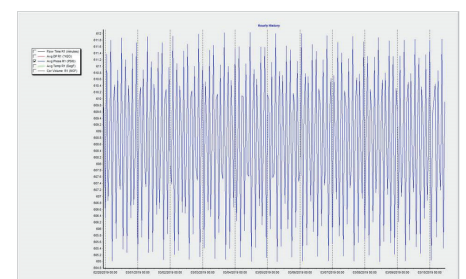
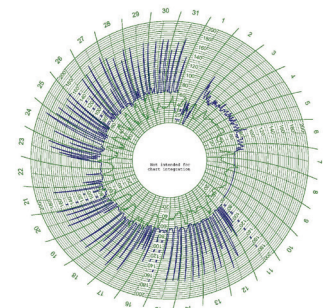
- Regulator Station Monitoring
- Chart Replacement
- System End Point Monitoring for Load Study
- Pressure Control at Critical Points
- System Alarming for Pressure and Temperature
- Automated Pressure Control from One Station to Another using Talon™ Family Software and Point Transfer Features

PORTABLE PRESSURE RECORDER



Eagle offers a Portable version of the EPR for pressure testing in the field. Offering pressure measurement in locations of the gas system where permanent installations are not practical or required.

- Temporary Pressure Testing in the Field
- Capture Pressure Profiles for Studies of System, Spikes, and Droops
- Case Color Options
 - Black
 - Olive Green
 - Yellow
- Graphing
 - Live and Historical Trending using Eagle Software Packages



Field to Front Office Solutions™

TECHNICAL SPECIFICATIONS

Features

- Enclosure: Rugged, UV Resistant Polycarbonate, Hinged & Lockable
- Mounting: Pole, Wall
- Integrated Static Pressure Transducer (PSIA or PSIG)
- Integrated Temperature Probe (Various Lengths)

Display Options

- Single Line Alphanumeric Static
- Four Line Alphanumeric Scrolling
- Mag Scroll or Optional Push Button

Operating Temperature

- -40°C to +70°C (-40°F to +160°F)

Power

- Input Power: 7 to 30 VDC
- Integrated Solar Charger: up to 20W

Performance

- Processor: ARM-Dual Core 32 Bit at 48 MHz
- SRAM Memory: 4MB
- SPI Flash Memory: 4MB
- Support for Months / Years of Data Storage, Dependent on Configuration
- A/D: 16-Bit Analog to Digital Conv. with Optional HART Filtering
- Serial Speeds up to 921600 BPS may be Limited by Field Hardware

Accuracy (over -20 °F to 140 °F including linearity, hysteresis and repeatability)

- Pressure Measurement ±0.25% of Full Scale
- Temperature Measurement ±1.0°F
- Optional Higher Accuracy Versions Available

Long Term Stability

- Press. Measurement ±0.5% of Full Scale per Year
- Temp. Measurement ±0.5°F per Year

AVAILABLE INPUT & OUTPUT (I/O)

Available On-Board

- Optional USB Host & USB Device Ports
- Optional Ethernet Port (8 - Simultaneous)
- (2) Serial Ports (RS232 / RS485) with On-Board Power Control for Communications Devices
- (4) Analog Inputs (4-20mA / 1-5VDC) with Optional HART filtering
- (1) RTD (Temperature Probe)
- (2) Form A / Form C Pulse Input
 - High and Low Speed Operation

- (2) Form C Solid State Relays
- (2) Digital Outputs
- (2) Digital Inputs

Optional Expansion Modules

- Serial Port (RS232 / RS485) with On-Board Power Control for Comm Devices (9010552)
- 3 Channel Analog Output Module (9010551)
- 8 Channel Optically Isolated Digital I/O Module (9010534)

Optional Extender Board (9010499)

- (2) Serial Ports (RS232 / RS485)
- (4) Analog Inputs (4-20ma / 1-5VDC)
- (1) RTD (Temperature Probe)
- (2) Form A / Form C Pulse Input
 - High and Low Speed Operation
- (3) Digital Outputs
- (3) Digital Inputs
- (2) OPTO 22 G4 Package Slots
 - IAC, IDC, OAC, & ODC
- (1) Analog Output (4-20ma/1-5VDC)

COMMUNICATIONS & DATA COLLECTION



- USB & Serial Field Laptop Interface
- Ethernet TCP-IP (Supports Simultaneous Connects)
- Land Line Telecom Modem
- Cellular
- Satellite (LEO & GEO)
- Radio (Spread Spectrum & Licensed Frequency)

- Protocols: ERC-HexASCII (Native), MODBUS, & MODBUS TCP