

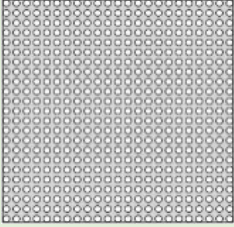


PERFORATED SHEET AND MESH

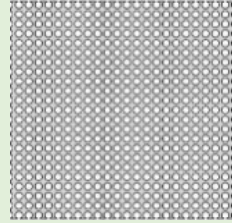
(OUR MOST COMMONLY STOCKED SIZES, OTHER SIZES/PATTERNS ON APPLICATION.)

DUTCH WEAVE AND FINER MESH AVAILABLE.

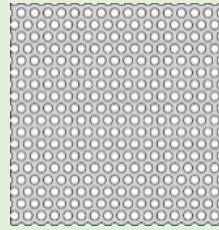
.033 (1/32")
324 holes/sq/ in
(26% open area)



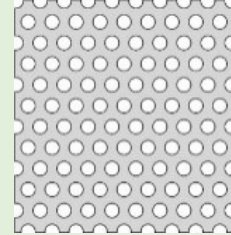
.045 (3/64")
224 holes/sq/ in
(37% open area)



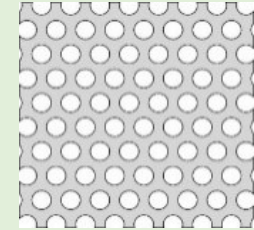
.062 (1/16")
144 holes/sq/ in
(37% open area)



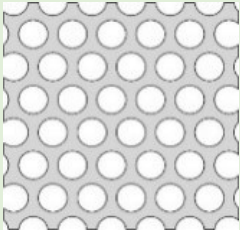
.093 (3/32")
46 holes/sq/ in
(33% open area)



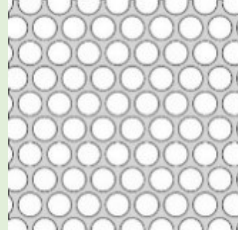
.125 (1/8")
33 holes/sq/ in
(40% open area)



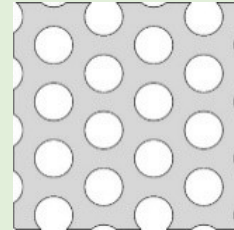
.187 (3/16")
18 holes/sq/ in
(50% open area)



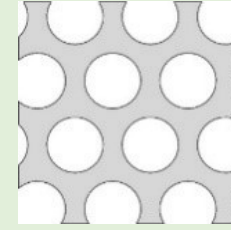
.156 (5/32")
33 holes/sq/ in
(62% open area)



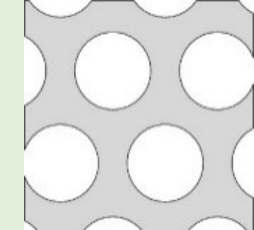
.250 (1/4")
8 holes/sq/ in
(40% open area)



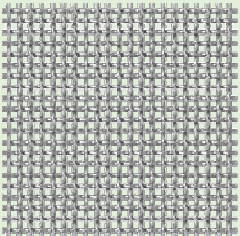
.375 (3/8") on 1/2"
centers
(51% open area)



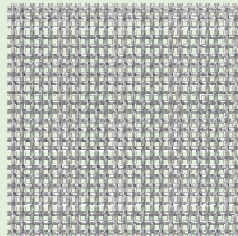
.050 (1/2") on 11/16"
centers
(48% open area)



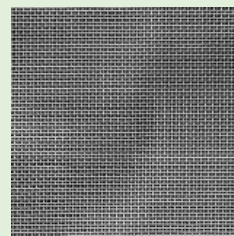
1/32" openings,
20 mesh
(52% open area)



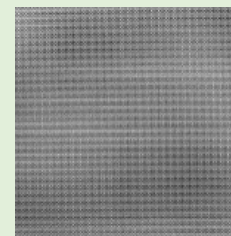
1/50" openings,
30 mesh
(41% open area)



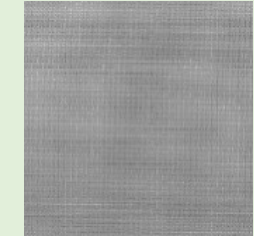
1/64" openings,
40 mesh
(36% open area)



.010" openings,
50 mesh
(30% open area)



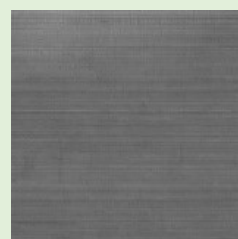
.009" openings,
60 mesh
(31% open area)



.007" openings,
80 mesh
(31% open area)



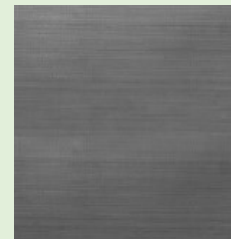
.005" openings,
100 mesh
(30% open area)



.0041" openings,
150 mesh
(37% open area)



.0029" openings,
200 mesh
(33.6% open area)



.0017" openings,
325 mesh
(31.0% open area)

